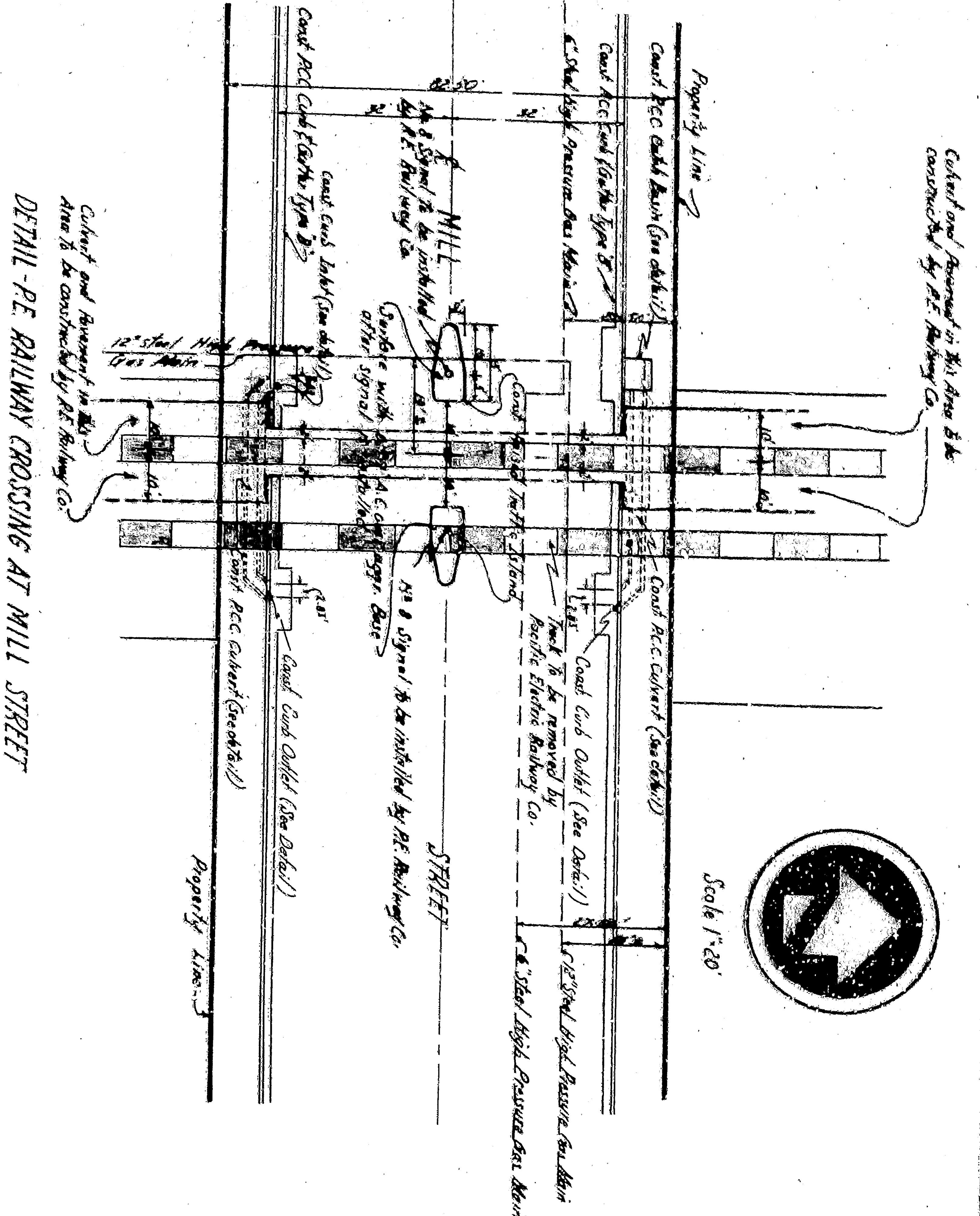
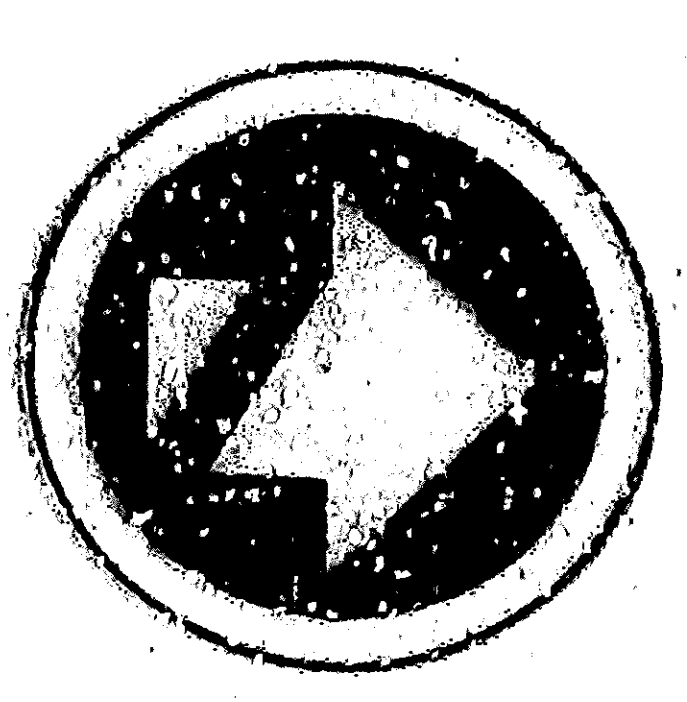
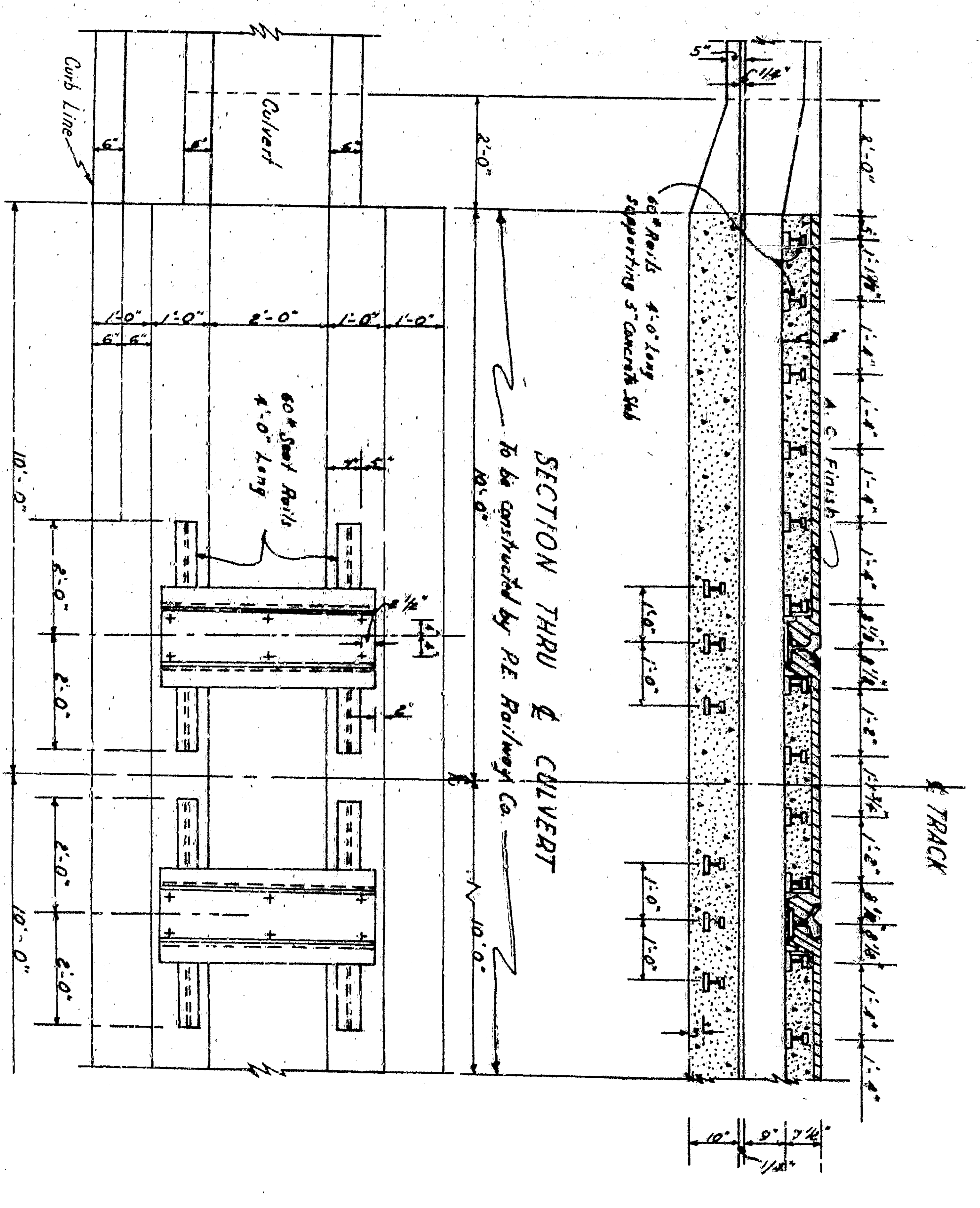


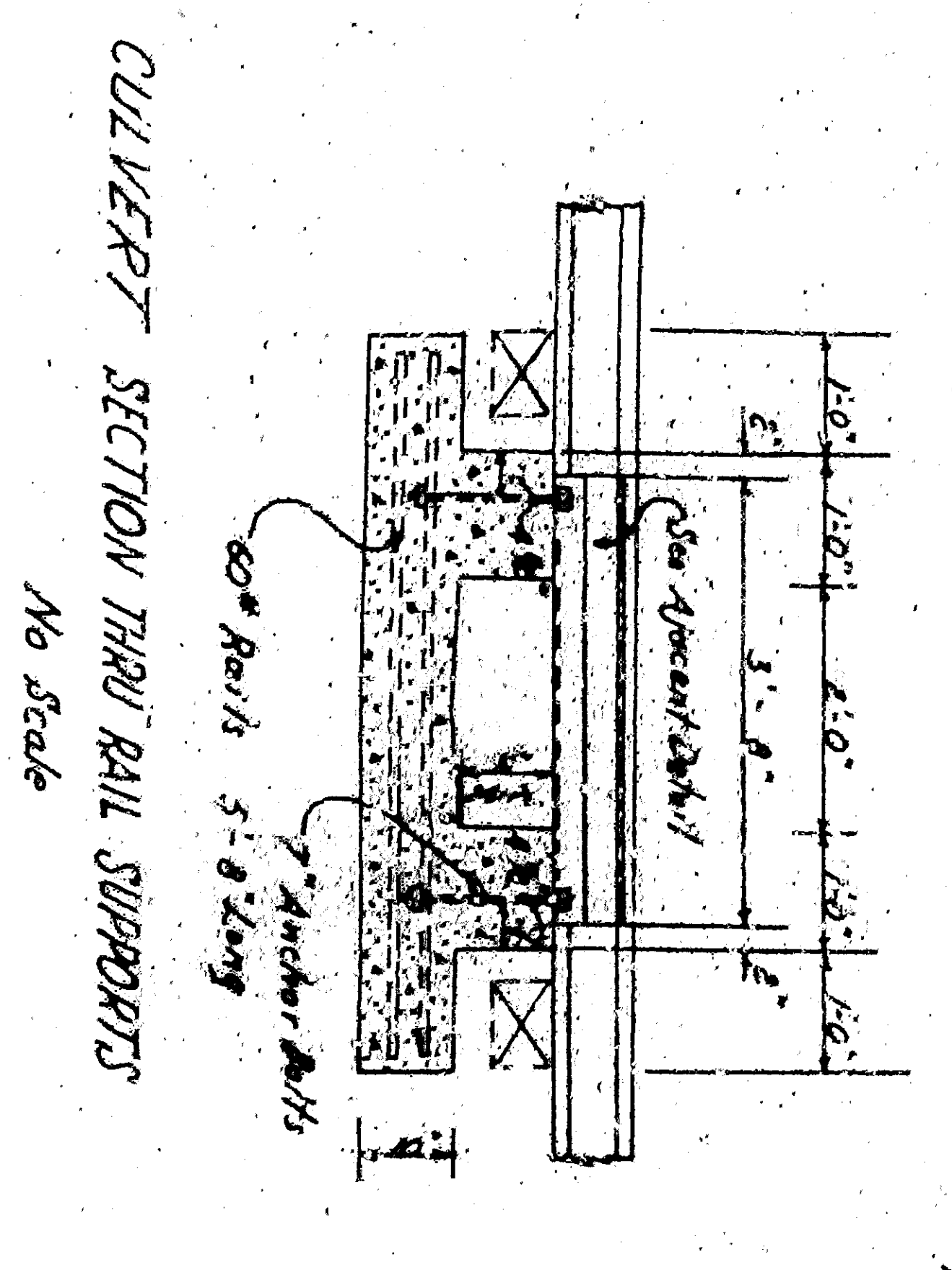
APPROVED	DATE	1923
DRAWING NO.	2715	
REGISTERED CIVIL ENGINEER NO.	1343	
DRAWN BY		
CHECKED BY		
SHEET 3 OF 3 SHEETS		
CITY OF SAN BERNARDINO		
DEPARTMENT OF ENGINEERING		
MILL STREET		
Between 1st Street and E Street		
Wintersburg		



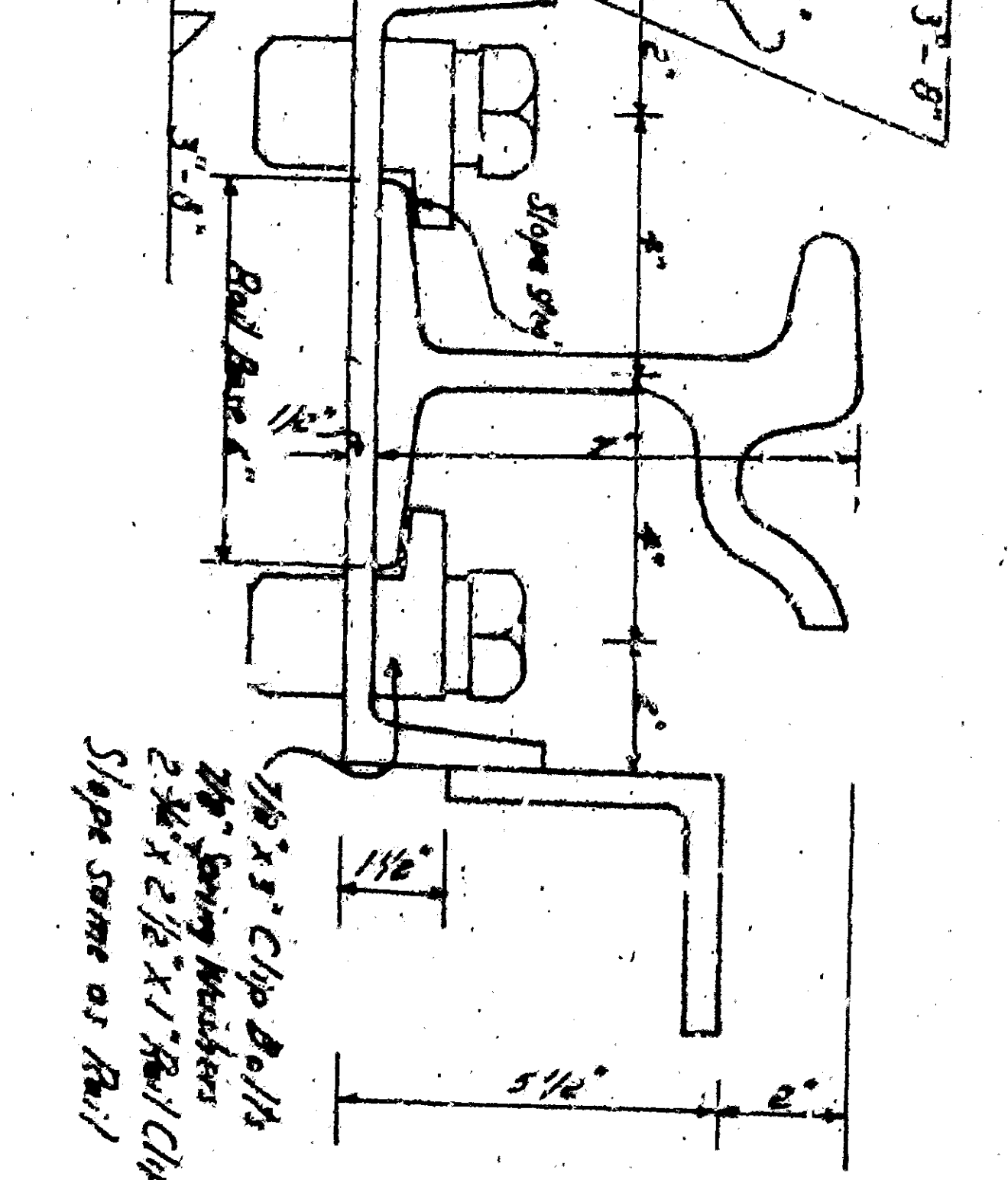
DETAIL - PE RAILWAY CROSSING AT MILL STREET



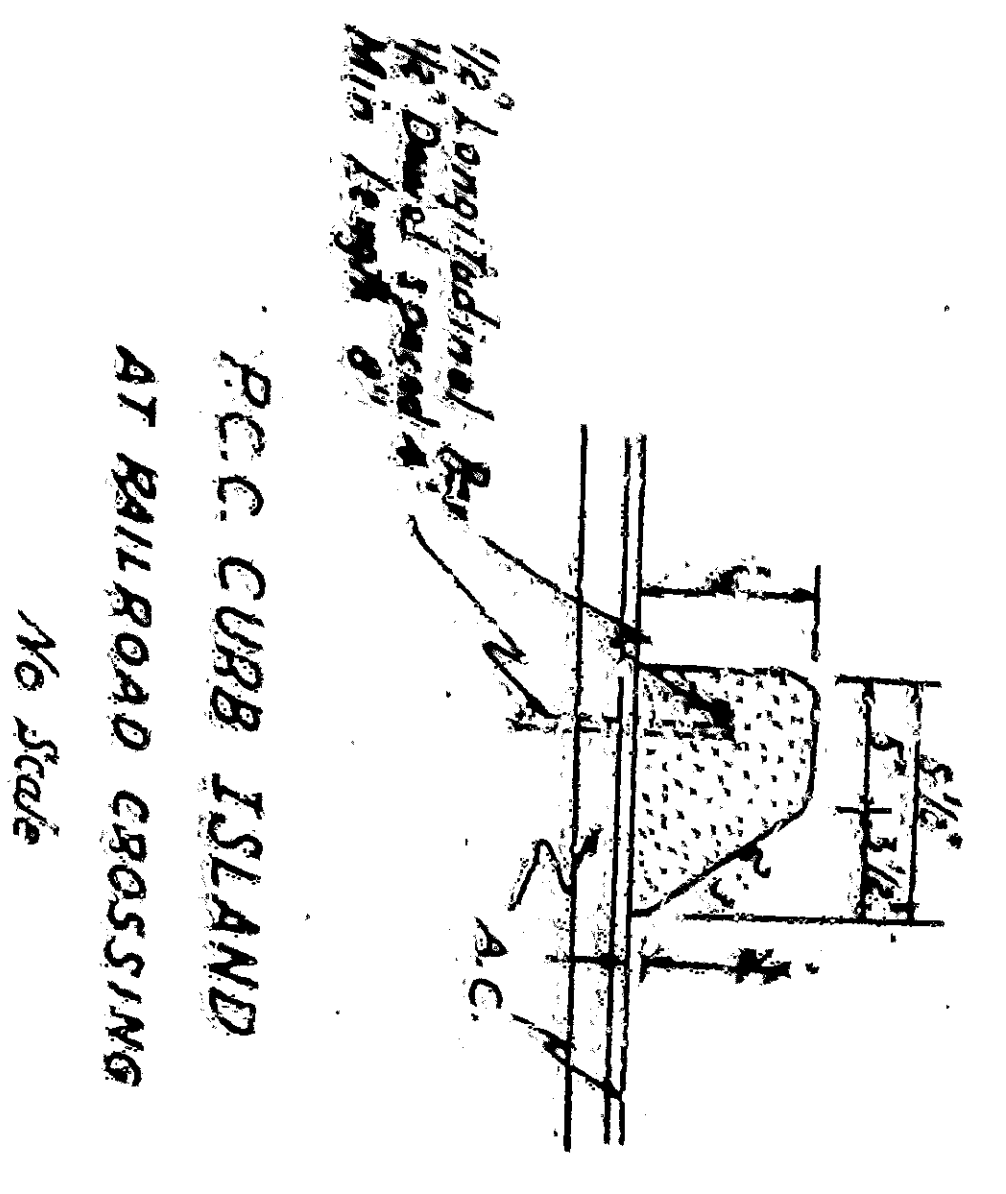
PLAN



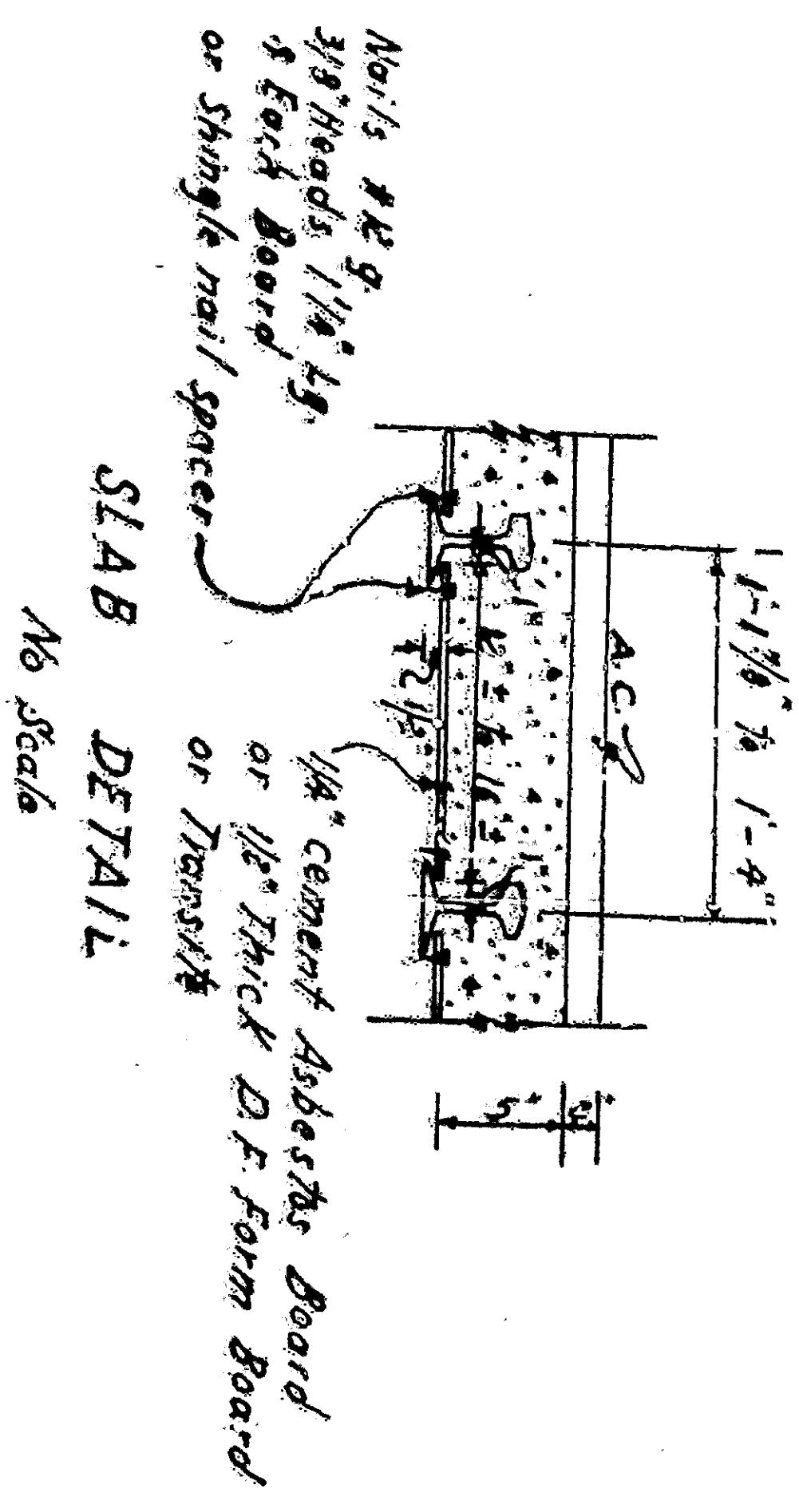
CULVERT SECTION THRU RAIL SUPPORTS



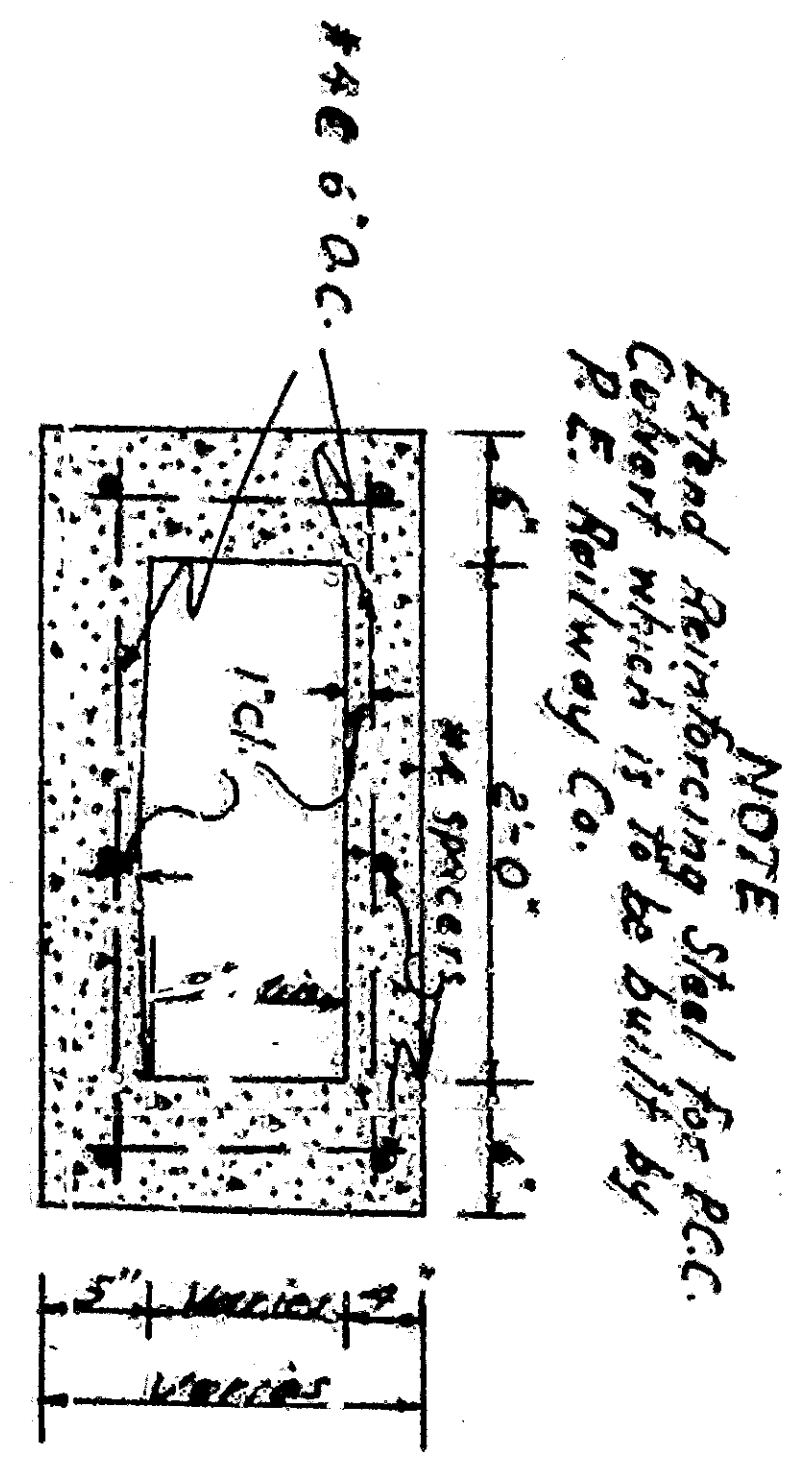
DETAIL OF RAIL SUPPORTS



P.C. CURB ISLAND AT RAIL ROAD CROSSING

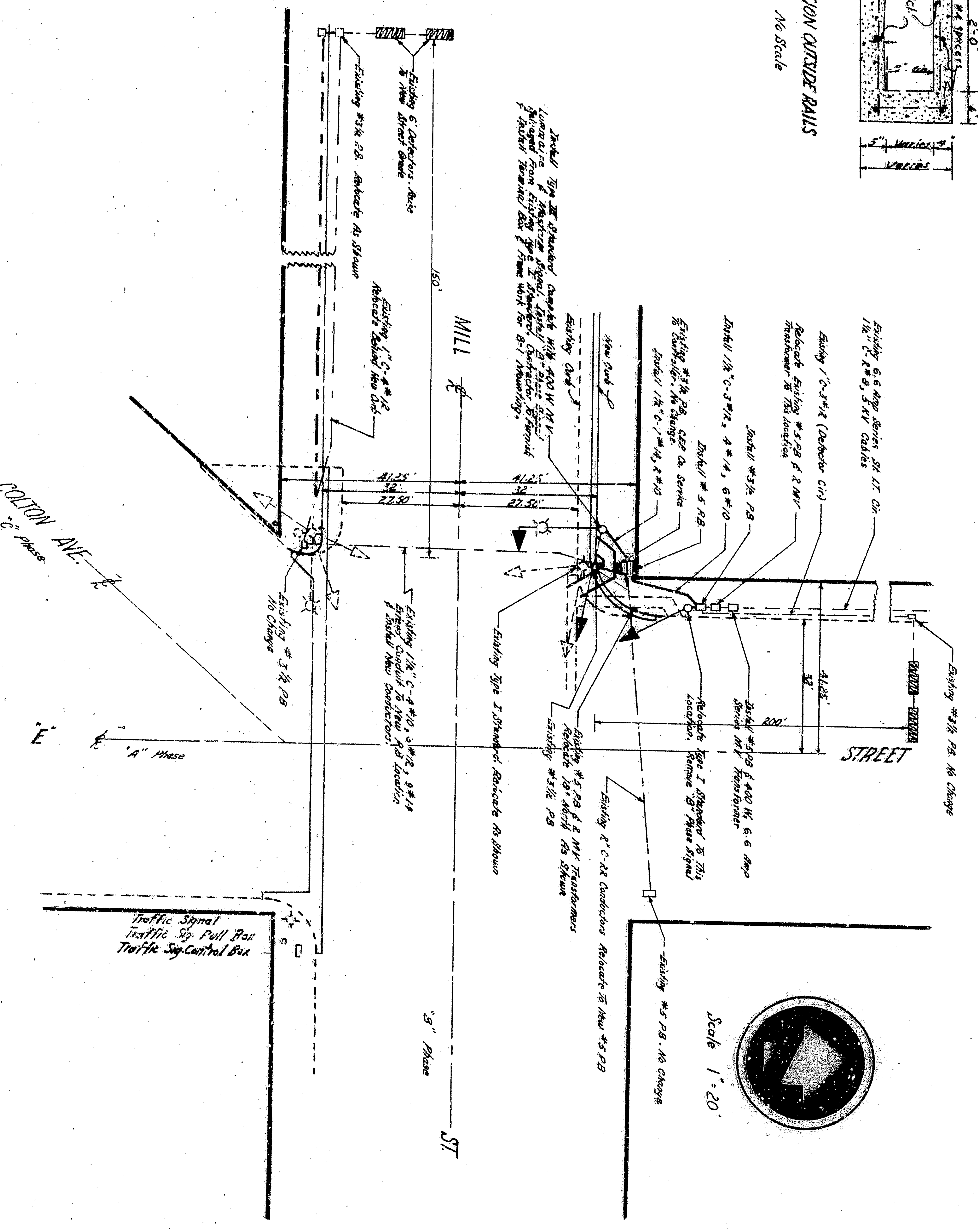


SLAB DETAIL



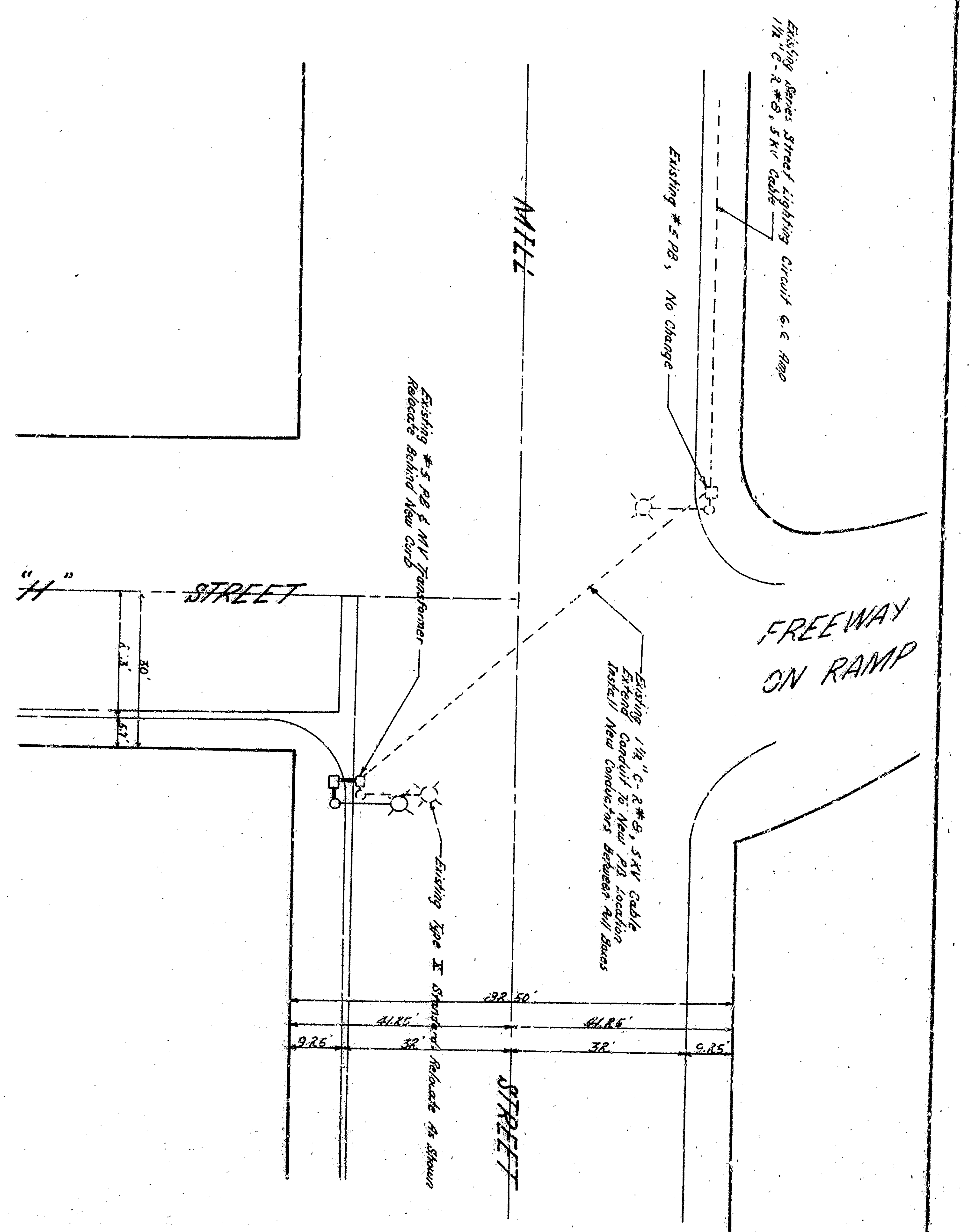
CULVERT SECTION OUTSIDE RAILS

NOTE: Structural Steel for PE Culvert which is to be built by PE Railway Co.



TRAFFIC SIGNAL DETAILS

HIGHWAY LIGHTING DETAIL



APPROVED	DATE	1963
DRAWING NO.	2715	
REGISTERED CIVIL ENGINEER NO.	1243	
CHECKED BY	W. J. M.	
SHEET 3 OF 3		
CITY OF SAN BERNARDINO		
DEPARTMENT OF ENGINEERING		
MILL STREET		
Between W Street and E Street		